



Priory Court

RESIDENTS ONLY
STRICTLY
NO PARKING
OR TURNING

Priory Court, Priory Avenue Caversham, Reading, RG4 7SN

£180,000

Walmsley

Priory Court, Priory Avenue Caversham, Reading, RG4 7SN

A very well presented first floor retirement apartment with lift access for the over 65's, conveniently situated within the heart of Caversham on a very level terrain, within a stone's throw of most of Caversham's central services and amenities including library, bakery, Waitrose. Pharmacy and hairdressers to name a few. Its location also offers very easy access to local bus services. The accommodation which benefits from re redecoration and new carpets comprises: entrance hall with storage cupboard, sitting room, kitchen, refitted shower room and a double bedroom with fitted wardrobe. This property is sold with no onward chain. EPC rating B.

Priory Court was constructed by McCarthy & Stone (Developments) Ltd and comprises 27 apartments arranged over 3 floors each served by lift. The complex is surrounded by attractive communal gardens and furthermore benefits from a residents lounge area. The Development Manager can be contacted from various points within each property in the case of an emergency. For periods when the Development Manager is off duty there is a 24 hour emergency call system.

- * 125 year lease from 1 July 1999
- * EPC B
- * Council Tax Band C

Video tour available on request

Tenure - Leasehold



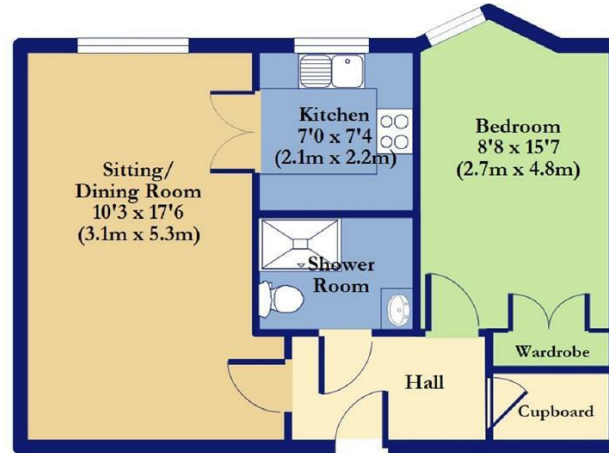


- Central location
- No onward chain
- Recently redecorated
- Refitted shower room
- Double bedroom with fitted wardrobe
- Residents lounge



RESIDENTIAL SALES • LETTINGS • PROPERTY MANAGEMENT • NEW HOMES

Walmsley



Priory Court, Priory Avenue

FOR ILLUSTRATIVE PURPOSES ONLY. NOT TO SCALE

Whilst every attempt has been made to ensure the accuracy of the floor plan shown, all measurements, positioning, fixtures, features, fittings and any other data shown are an approximate interpretation for illustrative purposes only and are not to scale. No responsibility is taken for any error, omission, miss-statement or use of data shown.

The above statement applies to both 'The Floor Plan People' and the Company or individual displaying this floor plan.

(c) THE FLOOR PLAN PEOPLE unauthorised reproduction prohibited.

Important: Walmsley Estate Agents would inform prospective purchasers that these sales particulars have been prepared as a general guide only. A detailed survey has not been carried out, nor the services, appliances and fittings tested. Room sizes should not be relied upon for furnishing purposes and are approximate. If floor plans are included, they are for guidance only and illustration purposes only and may not be to scale. If there are any important matters likely to affect your decision to buy, please contact us before viewing the property.

