



Brill Close, Caversham, Reading, RG4 7RD

£625,000

Walmesley

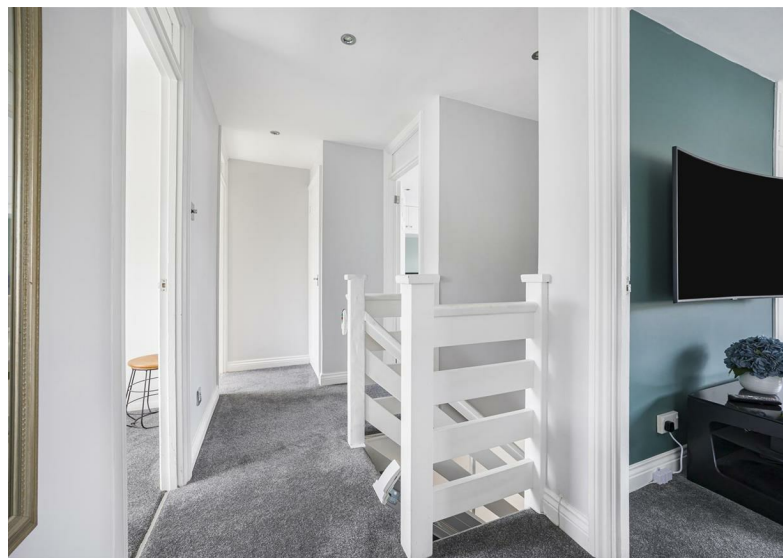
Brill Close, Caversham, Reading, RG4 7RD

Walmsley Estate Agency is delighted to present this spacious four-bedroom detached property, in a cul-de-sac within the sought-after locale of Caversham. Boasting a generous layout, the residence comprises an entrance hall, cloakroom, sitting room, dining area, garden room, well appointed kitchen with granite work surfaces, landing, four bedrooms including an en-suite to the second bedroom, and a modern family bathroom. Outside, the property benefits from a generous and mature enclosed rear garden, an integral garage, and block paved driveway parking.

Positioned on Brill Close, this property enjoys a prime location less than a mile from Caversham centre, ensuring easy access to a plethora of amenities including shops, eateries, and bus services connecting to Reading mainline station (Paddington in just 25 minutes). Additionally, residents benefit from proximity to esteemed primary and secondary schools, picturesque golf courses, and scenic walks through the idyllic Hemdean Valley. With an EPC rating of D and council tax band E. NO ONWARD CHAIN.

Tenure - Freehold





- Detached family home
- Four bedrooms
- En-suite
- Generous size rear garden
- Garage
- Driveway
- No onward chain



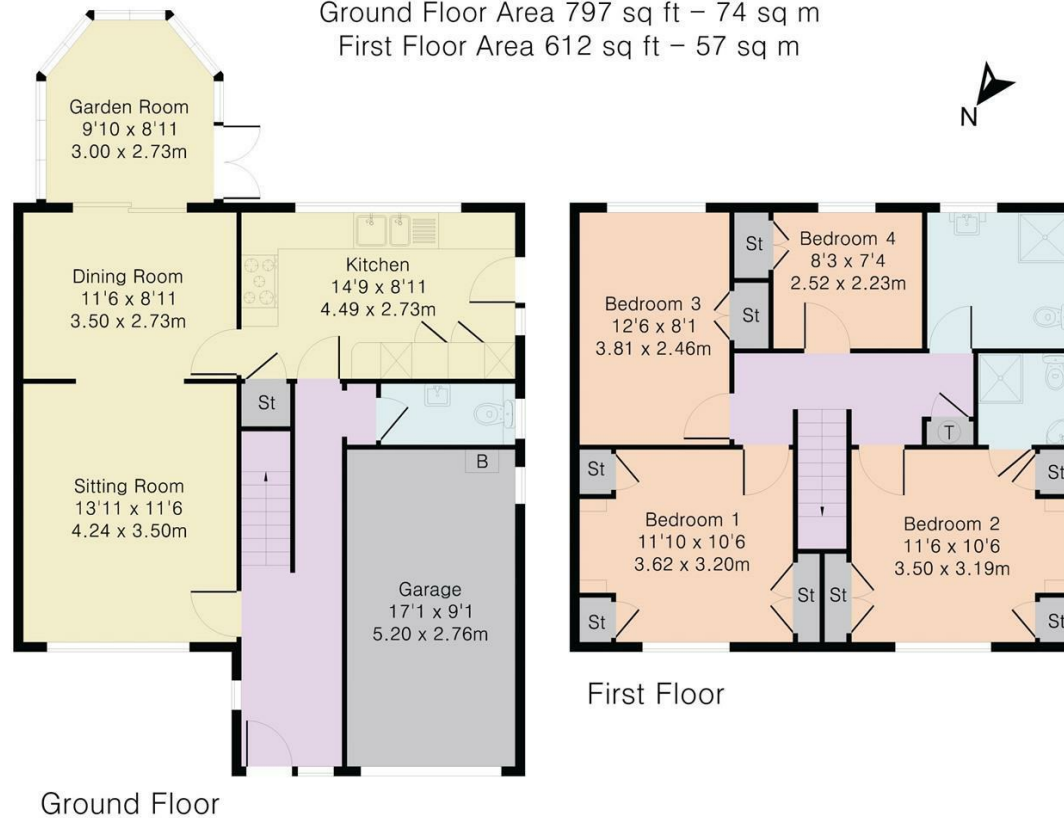
RESIDENTIAL SALES • LETTINGS • PROPERTY MANAGEMENT • NEW HOMES

Walmsley





Approximate Gross Internal Area 1409 sq ft – 131 sq m
 Ground Floor Area 797 sq ft – 74 sq m
 First Floor Area 612 sq ft – 57 sq m



Important: Walmsley Estate Agents would inform prospective purchasers that these sales particulars have been prepared as a general guide only. A detailed survey has not been carried out, nor the services, appliances and fittings tested. Room sizes should not be relied upon for furnishing purposes and are approximate. If floor plans are included, they are for guidance only and illustration purposes only and may not be to scale. If there are any important matters likely to affect your decision to buy, please contact us before viewing the property.

